

## **RIDGEWOOD HILLS**

**WEATHERFORD**—Retreat from crowded neighborhoods to your new home, tucked away in a natural landscape of gently sloping, wooded hills. Ridgewood Hills is Northeast of Weatherford and offers a virtually private setting with nature and wildlife.

### **Features**

- Common Area with Pond
- Various lot sizes between 1 and 2.5 acres
- Quick access to Weatherford's new hospital location, the Rader Park Complex, Golf Course, and Thomas P. Stafford Airport and Museum.
- Five minutes from SWOSU and I-40

Covenants and Restrictions available upon request.



# **CENTRAL WEST**



# **REAL ESTATE**

## **Central West Real Estate**

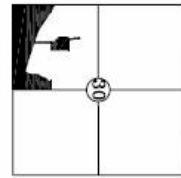
Danny Black – 580.772.4018 (mobile)

145 W. Main, Hydro OK 73048

405.663.2255

[www.dannyblack.com](http://www.dannyblack.com)

BASIS OF BEARINGS:  
GPS  
SOUTH LINE SECTION 30  
N89°54'30"E



CHUTE TABLE FROM CHUTE FROM MEET

CHUTE	LENGTH	RADIUS	CH BEARING	CH LENGTH
C1	270.50	204.00	S54°41'01"W	253.3
C2	230.43	465.72	S50°54'43"W	237.2
C3	138.85	230.25	S50°54'38"W	134.7

CHUTE TABLE FROM CHUTE FROM MEET

CHUTE	LENGTH	RADIUS	CH BEARING	CH LENGTH
C1	355.04	480.54	N4°45'29"E	324.17
C2	155.57	171.78	N4°23'12"E	150.58
C3	113.30	156.18	N50°49'41"E	110.90
C4	181.28	247.44	N50°32'44"E	180.05
C5	120.57	85.56	N51°40'53"E	110.84

### Ridgewood Hills Phase One

ACREAGES  
Common Area=4.71  
Easements  
Ridgewood Road=1.49  
Rhett West=1.45  
Brook Circle=83  
Rhett East=1.65  
Cord Canyon=1.02  
Total Easement  
Acreage=11.15 acres

- LEGEND
- BOUND PIN
- BOUND CORNER
- BOUND NAIL
- BOUND PIN w/ PLASTIC CAP
- CALCULATED POINT
- UTILITY EASEMENT

RANDALL CAMPO  
OKLAHOMA R.L.S. NO. 21482

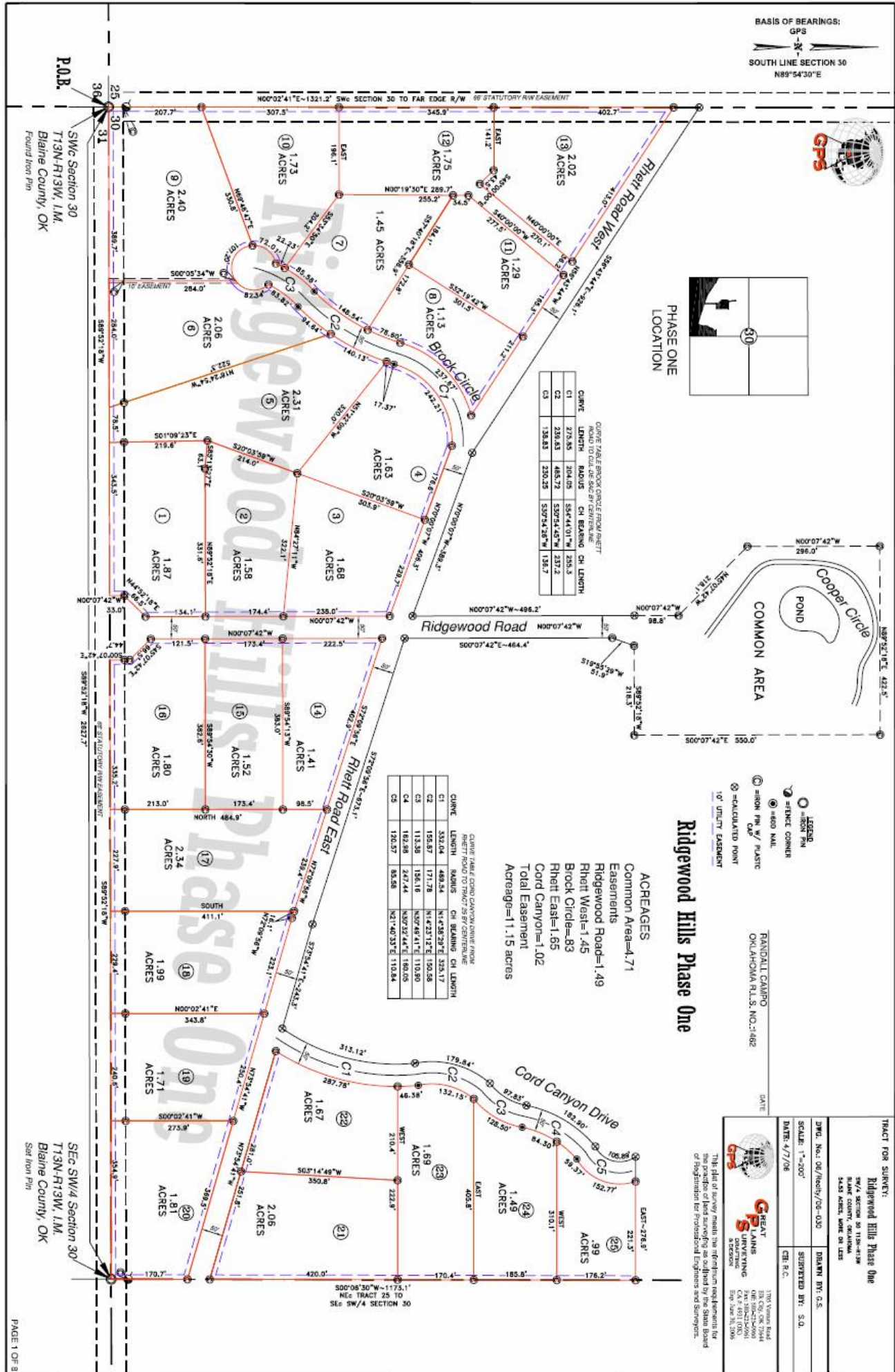
DATE

TRACT FOR SURVEY:	Ridgewood Hills Phase One
SW/4 SECTION 30 T13N-R13W	BLAINE COUNTY, OKLAHOMA
54.93 ACRES, MORE OR LESS	
DWG. NO.: 08/Rehdy/06-030	DRAWN BY: G.S.
SCALE: 1"=200'	SUPERSEDED BY: S.O.
DATE: 4/7/08	CHK. R.C.



GREAT PLAINS SURVEYING  
3100 N. VANCE ROAD  
ENID, OKLAHOMA 73708  
C.A. # 4911 (OK)  
Exp. 08/31/2008

This plat of survey meets the minimum requirements for the practice of land surveying as outlined by the State Board of Registration for Professional Engineers and Surveyors.



P.O.B.  
SW/4 Section 30  
T13N-R13W, L.M.  
Blaine County, OK  
Found Iron Pin

SEC SW/4 Section 30  
T13N-R13W, L.M.  
Blaine County, OK  
Set Iron Pin